



專注 | 專業 | 專心



手機畫冊

廣州市吉禾自動化設備有限公司
Guangzhou jehad Automation Equipment Co., Ltd.

地址：廣州市天河區廣園東路 2193 號時代新世界中心北塔 807、808
手機：13527800674
電話：020-87629650
郵箱：sales@jehad.cn
網址：http://www.jehad.cn

Address: 807, 808, North Tower, Times New World Center,
No. 2193, Guangyuan East Road, Tianhe District, Guangzhou
Mobile number: 13527800674
Tel: 020-87629650
E-mail: sales@jehad.cn
Website: http://www.jehad.cn



官網



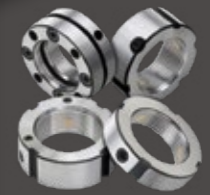
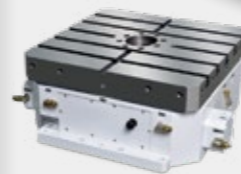
公眾號



吉禾工業

JEHAD INDUSTRY

專注於高端設備的生產配套
FOCUS ON THE PRODUCTION OF HIGH-END EQUIPMENT



廣州市吉禾自動化設備有限公司
Guangzhou jehad Automation Equipment Co., Ltd.

走進吉禾

專注高端設備的生產配套



ABOUT

關於我們

吉禾工業創立於 2003 年，一直專注於中高端機械設備的生產配套。服務於模具行業、汽車產業、鋰電池、新能源行業、工裝夾具、工具機產業及定製自動化機械等行業。

油壓：油缸、模具油缸、轉角油缸、伺服油缸、油泵、液壓閥、液壓馬達、接頭。

增壓：氣液增壓缸、多倍力氣缸、增壓器、增壓閥、打刀缸與打刀器 + 主軸油缸。

氣壓：滑台氣缸、氣爪、氣缸、電磁閥、大口徑氣缸。

電缸：伺服電缸、電缸模組。

傳動：減速機、間歇分割器、齒輪油壓高精分割旋轉台、NC 轉台。

伺服液壓站、液壓站設計與製造，油缸與氣液增壓缸的非標訂製，承接油壓機與伺服電缸壓機整套定製。

吉禾工業為構建高品質的產品體系及快速響應的技術服務，滿足客戶需求，致力建全產品體系並打造專業技術服務團隊，快速響應製造業客戶的各種需求。

以高品質及全面的產品和專業的技術服務為客戶提供全方位生產配套一站式服務。

JEHAD Industry was founded in 2003 and has been focusing on the production of mid-to-high-end machinery and equipment.

Serving the mold industry, automobile industry, lithium battery, new energy industry, tooling and fixtures, machine tool industry and custom automation machinery and other industries.

Oil pressure: oil cylinder, mold oil cylinder, corner oil cylinder, servo oil cylinder, oil pump, hydraulic valve, hydraulic motor, joint.

Boosting: gas-liquid booster cylinder, multi-force cylinder, booster, booster valve, cutter cylinder and cutter + spindle cylinder.

Air pressure: slide cylinder, air gripper, cylinder, solenoid valve, large-diameter cylinder.

Electric cylinder: servo electric cylinder, electric cylinder module.

Transmission: reducer, intermittent divider, gear oil pressure high-precision dividing rotary table, NC rotary table.

Servo hydraulic station, hydraulic station design and manufacture, non-standard customization of oil cylinders and gas-liquid booster cylinders, and complete customization of hydraulic presses and servo electric cylinder presses.

In order to build a high-quality product system and quick-response technical services to meet customer needs, Jihe Industry is committed to building a complete product system and a professional technical service team to quickly respond to various needs of manufacturing customers.

With high-quality and comprehensive products and professional technical services, we provide customers with all-round production supporting one-stop services.

1000⁺ 平方米
儲備倉庫
Reserve warehouse

19⁺ 年
行業經驗
Industry experience

20⁺ 位
技術人員
Technical staff

齒式油壓高精密分割旋轉台

TOOTH TYPE HYDRAULIC HIGH PRECISION DIVIDING ROTARY TABLE

產品特點 PRODUCT FEATURES

- 適合鏜床、銑床、磨床等機械；
 - 採用高精密三片式齒形離合器，定位精度高；
 - 旋轉時，輕鬆省力，操作簡便；
 - 強力油壓鎖緊方式，耐重切削。
- Suitable for boring machines, milling machines, grinders and other machinery;
 - Adopt high-precision three-piece toothed clutch, with high positioning accuracy;
 - When rotating, it is easy and labor-saving and easy to operate;
 - Strong hydraulic locking method, resistant to heavy cutting.

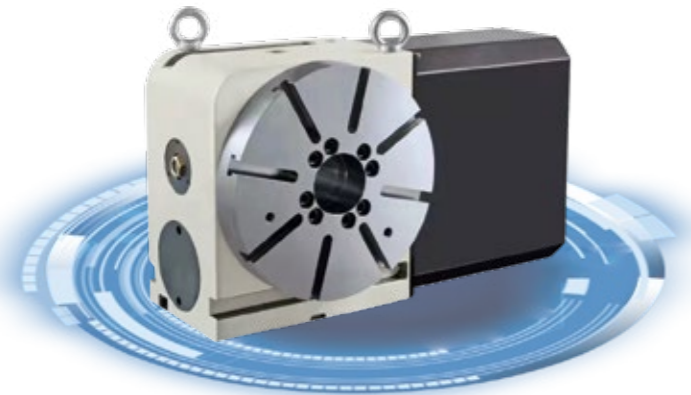


NC 四軸轉台

NC FOUR-AXIS TURNTABLE

產品特點 PRODUCT FEATURES

- 內部採用凸輪滾子傳動結構，優於渦輪蝸杆結構；
 - 凸輪與滾針軸承預壓零背隙滾動傳動；
 - 持續保持無間隙特性，無滑動摩擦；
 - 不因溫升導致精度不良；
 - 正逆向運動重複定位精度高；
 - 零背隙、高精度、高剛性、高效率；
 - 可通過伺服電機直接剎車定位加工，無需外設液壓或氣壓裝置剎車，節約能源成本。
- The internal use of cam roller transmission structure is superior to the turbine worm structure;
 - The cam and needle roller bearings are preloaded and zero-backlash rolling transmission;
 - Continuous backlash-free characteristics, no sliding friction;
 - Accuracy is not poor due to temperature rise;
 - Positive and negative motion repeatable positioning accuracy is high;
 - Zero backlash, high precision, high rigidity and high efficiency;
 - It can be directly braked and positioned by the servo motor, without the need for external hydraulic or pneumatic brakes, saving energy costs.

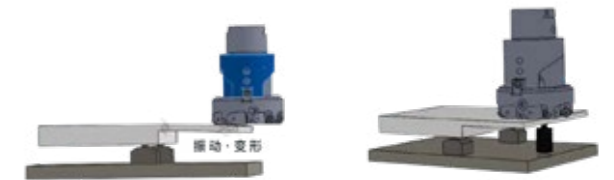


支撐缸系列

SUPPORT CYLINDER SERIES

產品特點 PRODUCT FEATURES

- 油壓範圍在 2.5MPa~7MPa；
 - 保證耐壓範圍 10.5MPa；
 - 可承受 70°C 高溫；
 - 體積小、重量輕、安裝輕便；
 - 產品精度高，使用壽命長，穩定性強；
 - 有效提高工件的剛性和穩定性。
- The oil pressure range is 2.5MPa~7MPa;
 - Guaranteed withstand voltage range of 10.5MPa;
 - Can withstand high temperature of 70 °C ;
 - Small size, light weight and easy installation;
 - The product has high precision, long service life and strong stability;
 - Effectively improve the rigidity and stability of the workpiece.

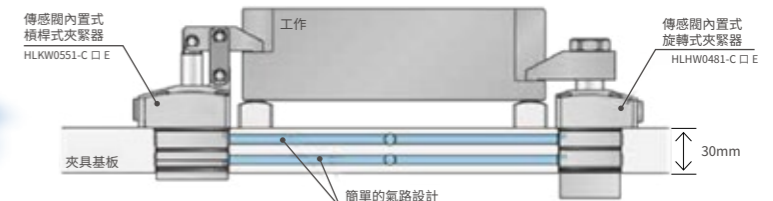
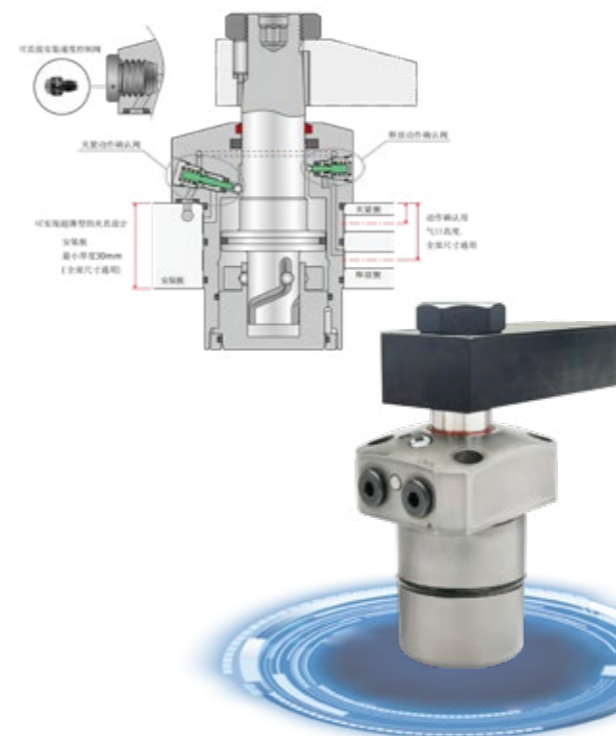


內置氣檢缸系列

BUILT-IN GAS DETECTION CYLINDER SERIES

產品特點 PRODUCT FEATURES

- 通過夾緊動作確認，能實現安全可靠地工件搬入搬出；
 - 內置傳感閥。可實現超薄型的夾具設計；傳感閥關閉時漏氣為零。可選擇空氣消耗量較小的空氣傳感器；
 - 簡單的气路設計；
 - 即使在下列情況下，動作確認用供气口高度也能通用，實現簡單的气路設計；
 - 組合使用不同尺寸的橫桿式夾緊器 (HLKW-C □ E) 時；
 - 組合使用橫桿式夾緊器 (HLKW-C □ E) 和旋轉式夾緊器 (HLHW-C □ E) 時。
- By checking the clamping action, the workpiece can be loaded and unloaded safely and reliably;
 - Built-in sensing valve. Ultra-thin fixture design can be realized;
 - Zero leakage when the sensing valve is closed. An air sensor with lower air consumption can be selected;
 - Simple air path design:
 - Even in the case shown below, the height of the air supply port for operation confirmation can be used in common, and a simple air path design can be realized;
 - When using different sizes of lever clamps (HLKW-C □ E) in combination;
 - When using a lever clamp (HLKW-C □ E) and a rotary clamp (HLHW-C □ E) in combination.

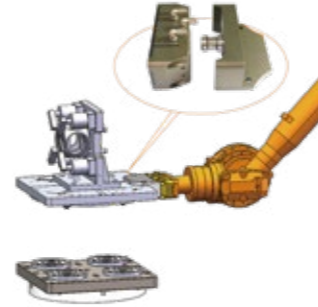


多工位零點定位

MULTI-STATION ZERO POINT POSITIONING



配合自動化的應用案例
Use cases with automation



產品特點 PRODUCT FEATURES

- > 讓上下料更簡單;
- > 配合零點定位夾具系統，完美的組合裝置可輕鬆實現任意產品的自動下料，降低人力需求。
- > Make loading and unloading easier;
- > With the zero-point positioning fixture system, the perfect combination device can easily realize the automatic unloading of any product and reduce the manpower requirement.

產品特點 PRODUCT FEATURES

- > 重複定位精準：≤ 0.005mm;
- > 機械結構鎖緊，鎖緊斷氣，可靠安全;
- > 表面及活塞硬化處理。
- > Repeated positioning accuracy: ≤ 0.005mm;
- > The mechanical structure is locked, the lock is closed and the gas is cut off, which is reliable and safe;
- > Surface and piston hardening.



工位機械手快換工具盤

BUILT-IN MOUNTING PNEUMATIC ZERO POSITIONING



配合自動化的應用案例
Use cases with automation



產品特點 PRODUCT FEATURES

- > 採用鋼球鎖緊方式;
- > 具有防塵功能;
- > 鋁合金材質體積小，重量輕。
- > Adopt steel ball locking method;
- > With dustproof function;
- > Aluminum alloy material is small in size and light in weight.

脹套

EXPANSION SLEEVE



產品特點 PRODUCT FEATURES

- > 可夾持短型、通盲孔工件;
- > 超佳同心度 ≤ 0.003mm;
- > 後拉式挾持作用，增加穩定性;
- > 標準型夾持範圍 20~200mm 內孔，可定製;
- > 大夾持範圍與縮小的行程；抗震效果好，因為脹套上的橡膠作防震。
- > Can clamp short, through-blind hole workpieces;
- > Excellent concentricity ≤ 0.003mm;
- > The back-pulling holding effect increases stability;
- > The standard clamping range is 20~200mm inner hole, which can be customized;
- > Large clamping range and reduced stroke; good anti-vibration effect, because the rubber on the expansion sleeve is anti-vibration.

可承接裝夾整體方案

CAN UNDERTAKE THE OVERALL SOLUTION OF CLAMPING

應用案例 APPLICATIONS



專業專注、精益求精
PROFESSIONAL FOCUS
KEEP IMPROVING

BMV 增壓式打刀器

BMV SUPERCHARGED KNIFE PUNCH

產品特點 PRODUCT FEATURES

- > 適用於直結式主軸、馬達內藏式主軸等，要求高速打刀專用；
- > BMV 增壓式打刀器為動力源，須搭配中空油壓缸使用；
- > 專為直結式主軸、內藏式主軸提供油壓動力，配合油壓打刀缸使用；
- > 選擇打刀器內部之密封件；
- > 利用多年專業經驗及多次試驗，選擇出最佳種類，不但可使作動油料；
- > 耗損較少，免除經常添油，避免因漏油而對高速主軸造成傷害。
- > It is suitable for direct-connected spindles, motor-built-in spindles, etc., and is required for high-speed cutting;
- > BMV supercharged knife beater is the power source and must be used with a hollow hydraulic cylinder;
- > It is specially designed to provide hydraulic power for direct-connected spindles and built-in spindles, and is used in conjunction with hydraulic cylinders;
- > Select the seal inside the knife;
- > Using years of professional experience and many tests, the best type is selected, which can not only make the actuating oil;
- > Less wear and tear, avoid frequent oil addition, and avoid damage to the high-speed spindle due to oil leakage.



JUC-φ90*8ST



JUC-φ100*13ST



JUC-φ110*10ST



JUC-φ120*12ST
JUC-φ120*14ST



BMT 增壓式打刀缸

BMT SUPERCHARGED KNIFE CYLINDER

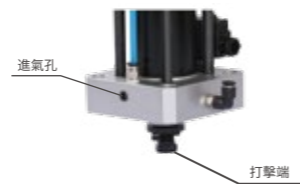
產品特點 PRODUCT FEATURES

- > 固定法蘭座內設有鬆刀時自動吹氣清潔功能；
- > 可免外加吹氣閥；
- > 打擊端點經過粹火硬化處理，反牙尺寸可調，耐撞，且調整方便；
- > 油杯油量液位檢出裝置；
- > 補油油杯探扁平設計，直接貼壁結合，具有穩固、不波漏、不占空間、不會正斜之優點。內設有浮筒，配合外側感應器檢出油量液位，能提前告知電腦，避免撞刀及無故停機之損失。且外型美觀、整組操用耐油、耐撞、透明材質，可目視油量不易破損。
- > The fixed flange seat is equipped with automatic blowing and cleaning function when the knife is loosened;
- > Additional blowing can be avoided;
- > The striking end is hardened by pure fire, and the size of the reverse tooth is adjustable, which is resistant to impact and easy to adjust;
- > Oil cup oil level detection device;
- > The oil filling cup has a flat design and is directly attached to the wall, which has the advantages of stability, no wave leakage, no space occupation, and no positive slope. Equipped with a buoy inside, with the external sensor to measure the oil level, it can inform the computer in advance to avoid the loss of knife collision and unreasonable shutdown. And the appearance is beautiful, the whole group is made of oil-resistant, impact-resistant, transparent material, and the oil volume is not easy to be damaged.



油杯油量液位檢出裝置

浮筒



打擊端

進氣孔

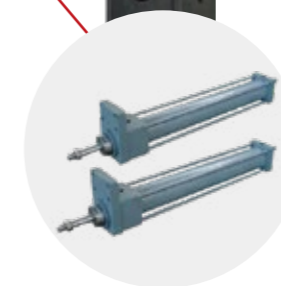
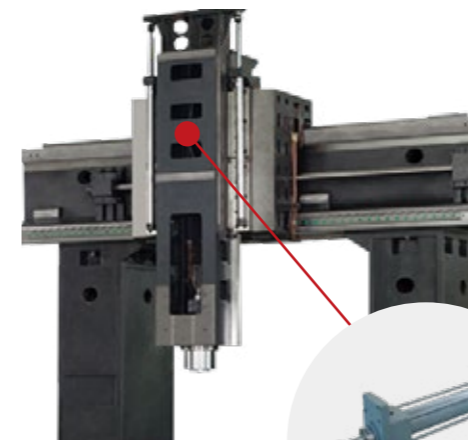
非標定製

NON-STANDARD CUSTOMIZATION

吉禾工業可根據設備定製、設計、製造，各種非標液壓與氣動元件

JEHAD Industry can customize, design and manufacture various non-standard hydraulic and pneumatic components according to equipment.

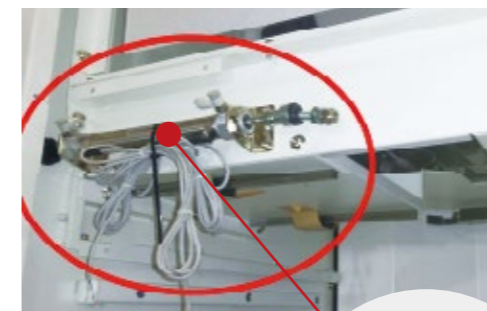
吉禾品質
JEHAD QUALITY



平衡缸
BALANCE CYLINDER



刀庫帶防落裝置缸
TOOL MAGAZINE WITH ANTI-FALL DEVICE CYLINDER



自動門感應氣缸
AUTOMATIC DOOR INDUCTION CYLINDER



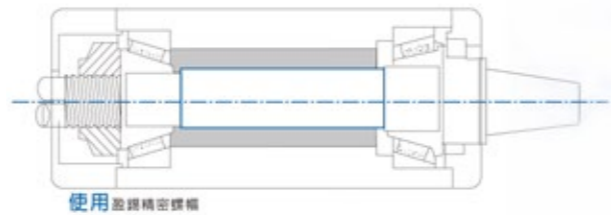
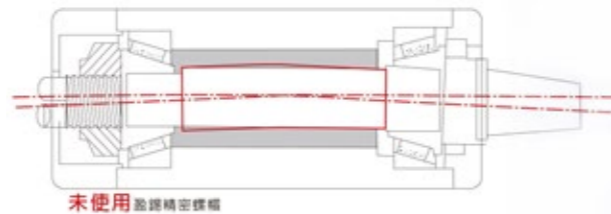
齒條油缸
RACK CYLINDER

自鎖螺母

SELF-LOCKING NUTS

產品特點 PRODUCT FEATURES

- > YSF 牙腹鎖定:
- > YSF 銷定方式，為螺紋半角 30°角，三點式鎖定；本產品為本公司標準產品，其優異的鎖定設計，能使圖定鋼上之螺紋，完全契合於公螺紋上，使其防鬆效果完美無缺更因為其 30°角的设计，減少了因為鎖緊螺絲因而產生的力距。(此力距如果超過軸向負荷)
- > YSF belly lock:
- > The YSF pinning method is the half angle of the screw alignment 30°, three-point locking; this product is a standard product of the company, and its excellent locking design can make the screw on the fixed steel completely fit on the male screw, making it The anti-loosening effect is perfect and because of its 30° angle design, the force distance caused by the locking screw is reduced. (If this force distance exceeds the axial load)



產品參數 PRODUCT PARAMETERS

材質 Material	SCM440 (42CrMo4) 調質
硬度 Hardness	HRC48° ~52°
螺紋精度 Thread accuracy	ISO 4H 精密研磨
平行度 Parallelism	0.002mm
平面偏擺	0.002mm
同心度	0.005mm



YSPL 精密鎖定螺帽



SGL 精密螺帽



YSRH 螺帽方型



SGL-F 精密鎖定螺帽

機床液壓站

MACHINE TOOL HYDRAULIC STATION

機床首選
MACHINE TOOL FIRST CHOICE



產品特點 PRODUCT FEATURES

- > 伺服電機閉環控制，減少無用功損耗，油缸動作時電機開始運轉，高壓時無溢流，不產生溫升。與普通異步電機液壓系統相比耗電量平均降低 30%-90%；
- > 按需供油、取消節流閥和溢流閥，液壓油溫升降到最低；
- > 內齒輪泵設計，脈動小，噪音低；
- > 油溫低，油箱設計小，根據實際空間設計。
- > The closed-loop control of the servo motor reduces the wasted power loss, the motor starts to run when the oil cylinder moves, there is no overflow under high pressure, and no temperature rise occurs. Compared with ordinary asynchronous motor hydraulic system, the power consumption is reduced by 30%-90% on average;
- > Supply oil on demand, cancel the throttle valve and relief valve, and the hydraulic oil temperature rises to the minimum;
- > Internal gear pump design, small pulsation and low noise;
- > The oil temperature is low and the fuel tank design is small, which is designed according to the actual space.

應用場景 APPLICATION SCENARIOS



低耗能
Low energy consumption

低油溫
Low oil temperature

低噪音
Low noise

省空間
Space saving